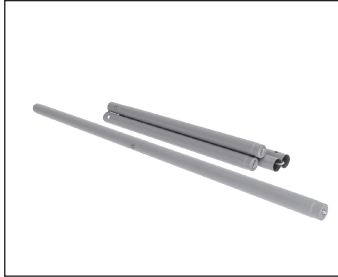


Setup Instructions



1. Extend and lock the support poles.



2. Place the 3 poles with the holes facing up.



3. Place counter top onto poles. Tap down with hand to secure.



4. Slide fabric graphic wrap onto hardware. Align seam to center of back of counter.



5. Angle and tuck gasket into channel in edge of counter top. Insert graphic gasket all the way around.



6. Turn counter upside-down.



7. Angle and tuck gasket into channel in edge of counter top. Insert graphic gasket all the way around.



8. Turn counter back over.



9. The zipper on the back is used to access inside the unit.

